

Industry-leading performance and efficiency from AC motors with proven Jungheinrich® technology

Precise operation of travel and hydraulics with enhanced multifunction control handle

New rigid mast results in excellent load stability and capacity retention at higher heights

Spacious operator compartment with extensive body padding combines comfort, flexibility and functionality

Informative display panel allows easy assessment of truck performance and condition



ETR 340 / 345 / 335d

36 Volt Electric Pantograph Reach Trucks (3,500 - 4,500 lbs.)

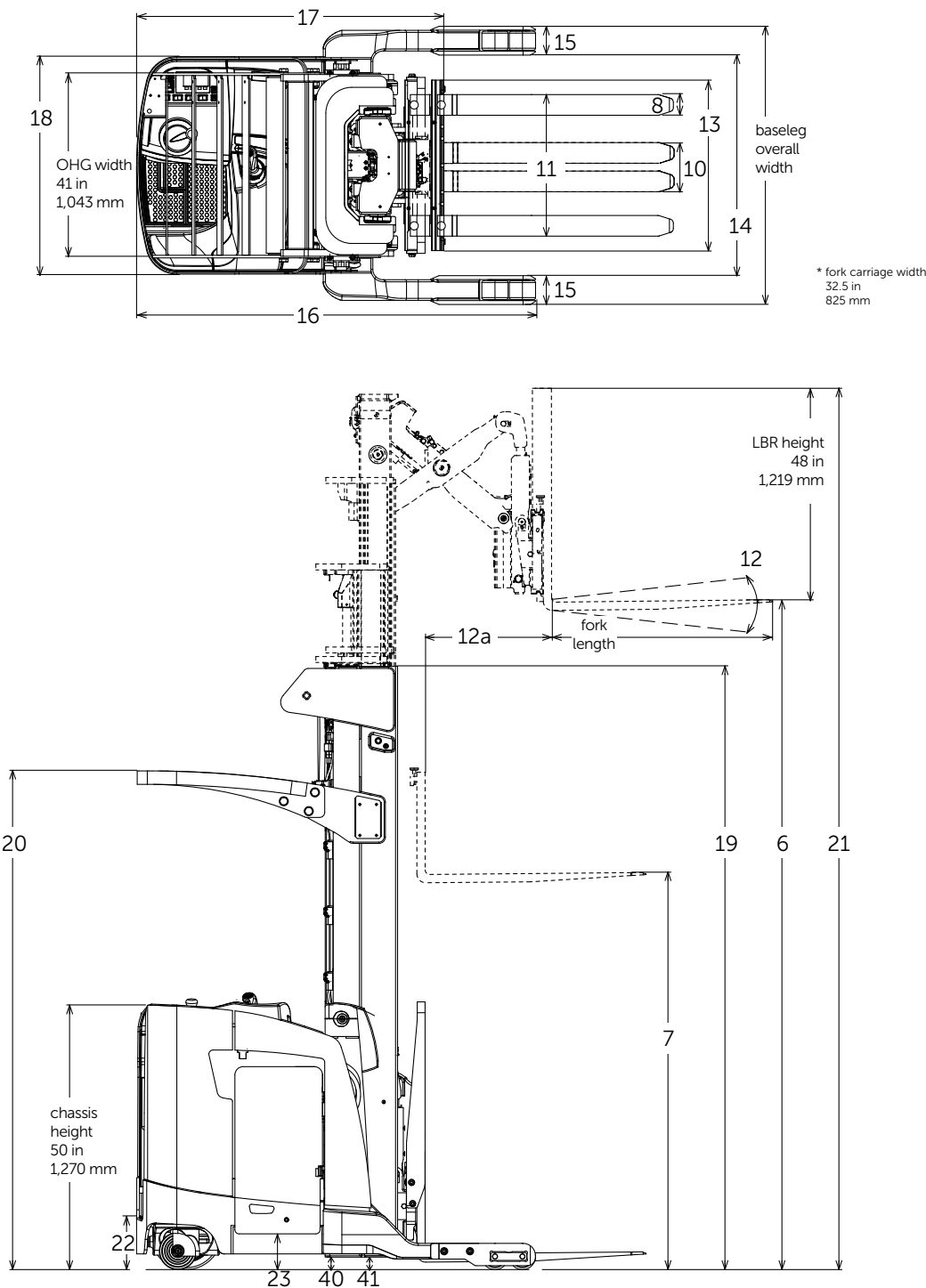
The ETR 340 / 345 single reach trucks and ETR 335d deep reach trucks boast strong performance – moving more pallets per hour and lowering overall cost of ownership – while keeping operators comfortable and productive.

The key advantages:

- **Higher performance** – one of the fastest in the industry, the reach truck's hydraulic system reaches a lifting speed of up to 160 feet per minute – helping your operators move more pallets in less time.
- **Greater productivity** – the ETR series can run up to two shifts on one battery charge allowing your operators to get the most out of their workday.
- **Premium ergonomics** – operators are more relaxed and productive largely due to the ergonomic compartment that minimizes operator fatigue. From the low step height, to the intuitive, multifunction control handle, the operator benefits from the excellent design. Productivity can be just as high in the last hour of the shift as in the first.
- **Improved awareness** – the clear operator display shows all the information needed to perform the task at hand. In addition, it allows operators to select from three pre-programmed drive and hydraulic performance modes to customize the truck for a particular application or operator skill level. All information is immediately displayed, contributing to the operator's overall awareness – leading to a more productive work environment.
- **Heavy-duty mast** – the Jungheinrich® ETR series features an enhanced-visibility, heavy-duty mast with durable rollers and mast rails designed to meet your most demanding applications. Combined with cushioning in mast staging functions, operators can precisely and securely position loads at all lift heights.
- **Space-saving design** – these reach trucks deliver greater productivity in any application where space is at a premium. The space-saving design means these trucks can stack and retrieve goods efficiently in narrow aisles and at high lift heights. Operators can also customize the drive and hydraulic settings to suit the application and their level of experience.


Machines. Ideas. Solutions.®

ETR 340 / 345 / 335d



Technical Data

as of: 05/2014

Characteristics	1	Model			ETR 340		ETR 345		ETR 335d		
	2	Type			Single Reach		Single Reach		Deep Reach		
	3	Power voltage			36		36		36		
	4	Capacity at rated load center	lb	kg	4,000	1,810	4,500	2,040	3,500	1,580	
	5	Capacity load center – distance from fork face	in	mm	24	600	24	600	24	600	
Dimensions	6	Maximum fork height	in	mm	242	6,145	242	6,145	242	6,145	
	7	Free fork height	in	mm	59	1,500	59	1,500	59	1,500	
	8	Fork width	in	mm	3.9	100	3.9	100	3.9	100	
	9	Fork thickness	in	mm	1.6	40	1.6	40	1.4	35	
	10	Fork spacing - out-to-out minimum	in	mm	12	305	12	305	12	305	
	11	Fork spacing - out-to-out maximum ¹⁾	in	mm	31.5	802	31.5	802	31.5	802	
	12	Tilt angle - forward / backward	deg		3° / 4°		3° / 4°		3° / 4°		
	12a	Reach stroke	in	mm	24	610	24	610	42	1,067	
	13	Mast width ²⁾	in	mm	32.2	816	32.2	816	32.2	816	
	14	Baseleg opening	in	mm	33 - 49	839 - 1,245	33 - 49	839 - 1,245	33 - 49	839 - 1,245	
	15	Baseleg width ³⁾	in	mm	5.5	140	5.5	140	5	127	
	16	Overall length	in	mm	76.1	1,932	76.1	1,932	78.1	1,983	
	17	Length to fork face	in	mm	55	1,397	55	1,397	62.3	1,582	
	18	Overall chassis width	in	mm	41.5	1,054	41.5	1,054	41.5	1,054	
	19	Overall lowered height	in	mm	107	2,720	107	2,720	107	2,720	
	20	Overall height to top of overhead guard	in	mm	95	2,413	95	2,413	95	2,413	
	21	Overall height with extended mast	in	mm	290	7,370	290	7,370	290	7,370	
	22	Step height	in	mm	9.8	250	9.8	250	9.8	250	
	23	Battery roller height	in	mm	7	178	7	178	7	178	
	24	Minimum outside turning radius	in	mm	70.74	1,797	70.74	1,797	70.74	1,797	
	25	Minimum aisle - 90° stack - zero clearance	in	mm	Please consult your Jungheinrich dealer						
	26	Load wheel centerline ⁴⁾	in	mm	5.3	133	5.3	133	5.3	133	
	Performance	27	Grade clearance ⁵⁾	%		15.5		15.5		15.5	
		28	Travel speed loaded/empty – standard ⁶⁾	mph	km/h	7.5 / 7.5	12.1 / 12.1	7.5 / 7.5	12.1 / 12.1	7.5 / 7.5	12.1 / 12.1
29		Travel speed loaded /empty – high performance ⁶⁾	mph	km/h	7.5 / 8.0	12.1 / 12.9	7.5 / 8.0	12.1 / 12.9	7.5 / 8.0	12.1 / 12.9	
30		Lift speed loaded / empty – standard	fpm	m/s	75 / 120	0.38 / 0.60	75 / 120	0.38 / 0.60	75 / 120	0.38 / 0.60	
31		Lift speed loaded / empty – high performance	fpm	m/s	90 / 160	0.45 / 0.80	90 / 160	0.45 / 0.80	90 / 160	0.45 / 0.80	
32		Lower speed loaded / empty – standard	fpm	m/s	110 / 110	0.55 / 0.55	110 / 110	0.55 / 0.55	110 / 110	0.55 / 0.55	
33		Lower speed loaded / empty – high performance	fpm	m/s	110 / 110	0.55 / 0.55	110 / 110	0.55 / 0.55	110 / 110	0.55 / 0.55	
34	Gradeability - loaded / empty - maximum	%		9 / 9		9 / 9		9 / 9			
Weight	35	Truck weight - empty - without battery	lb	kg	7,050	3,200	7,050	3,200	7,400	3,350	
	36	Battery weight - min	lb	kg	2,000	910	2,000	910	2,000	910	
	37	Battery weight - max	lb	kg	2,300	1,050	2,300	1,050	2,300	1,050	
Wheels, Chassis	38	Chassis type (stand/sit)			Stand		Stand		Stand		
	39	Wheelbase	in	mm	61.5	1,562	61.5	1,562	61.5	1,562	
	40	Ground clearance - center of wheelbase	in	mm	2.4	61	2.4	61	2.4	61	
	41	Ground clearance - lowest point at mast	in	mm	2.4	61	2.4	61	2.4	61	
	42	Tire size - steer	in	mm	13.5 x 5.5	343 x 140	13.5 x 5.5	343 x 140	13.5 x 5.5	343 x 140	
	43	Tire size - caster	in	mm	7 x 4	180 x 100	7 x 4	180 x 100	7 x 4	180 x 100	
	44	Tire size - load wheels	in	mm	5 x 3.62	127 x 92	5 x 3.62	127 x 92	5 x 3.62	127 x 92	
45	Brake type			Electromagnetic Disc		Electromagnetic Disc		Electromagnetic Disc			
Motors	46	Traction / pump / steer motor type			AC Induction		AC Induction		AC Induction		
	47	Traction motor output (60 minute rating) – standard	hp	kW	6.0	4.5	6.0	4.5	6.0	4.5	
	48	Traction motor output (60 minute rating) – high performance	hp	kW	9.2	6.9	9.2	6.9	9.2	6.9	
	49	Pump motor output (5 minute rating)	hp	kW	27.2	20	27.2	20	27.2	20	
50	Steer motor output (60 minute rating)			hp	kW	1.0	0.7	1.0	0.7		
Other	51	Battery maximum capacity - A/H (6 hour rating)			1,120		1,120		1,120		
	52	Battery compartment length ⁷⁾	in	mm	16.25	413	16.25	413	16.25	413	
	53	Battery compartment width	in	mm	38.42	976	38.42	976	38.42	976	
	54	Battery compartment height	in	mm	31.65	804	31.65	804	31.65	804	

1) Maximum fork spacing 27.5 inches (698 mm) with 33 inch BLO.

2) Out-to-out dimension across mast outer channels.

3) 5.9 inches (150 mm) on single reach trucks with MFH over 332 inches (8430 mm).

4) 7.3 inches (186 mm) on single reach trucks with mast MFH above 332 inches (8430 mm).

5) Reduce grade clearance by 1.5% with 18.25 inch (463 mm) battery compartment length or 21.25 inch (539 mm) battery compartment length vs. 16.25 inch (412 mm) length.

6) Maximum speed attainable, after break-in period, varies with truck travel direction, weight, rolling resistance, mast height, options and battery condition.

7) 21.25 inch (539 mm) battery compartment length standard on chassis with MFH over 332 inches (8430 mm).

The Jungheinrich Advantage

Enhanced visibility, heavy-duty mast

Jungheinrich masts provide excellent visibility to high lift heights.

- The sturdy mast and narrow, angled overhead guard promote excellent visibility to the load even in high stacking applications.
- The hydraulic mast cushioning and mast staging functions mean loads are handled smoothly.
- Shim-adjustable canted mast rollers.
- Heavy, interlocking mast rails.
- Optional integral sideshifter helps improve maneuverability.
- Fork heights up to 450 inches.



Overhead guard visibility

Spacious and ergonomic operator compartment

The spacious operator compartment combines comfort and functionality to improve operator efficiency.

- Location of operator controls allows for a flexible side stance position within the compartment.
- Low-effort electric power steering for precise control with minimal effort.
- Highly-informative display provides all essential information needed for the operator to stay productive.
- Anti-fatigue floor mat and generous padding for knees, hips, back and armrest.
- Storage space for operator's equipment, paperwork and materials.

Multifunction control handle

The intuitive, multifunction control handle is centrally positioned for easy access to truck functions.

- Maximum efficiency through simultaneous operation of travel, lift and auxiliary hydraulic functions.
- Rounded palm rest helps reduce operator fatigue over long shifts.



Multifunction control handle

Customized programming

Performance profiling allows you to customize drive and hydraulic settings based on the application, individual operator experience level and personal preferences. All display-based programming, performance and information requests can be performed with easily accessible buttons.



Operator compartment

Operator control panel

The easy-to-read control panel displays the information the operator needs to perform daily tasks.

- Battery discharge indicator
- 180° / 360° steer direction indicator
- Parking brake indicator
- Clock
- Hour meter
- Performance mode selector (1-3)

Powerful Jungheinrich AC technology

3-phase AC technology for drive, lift and steering offers several advantages over traditional direct current motors.

- Rapid acceleration and precise speed control.
- Smooth directional changes.
- Greater uptime due to maintenance-free motors without carbon brushes.
- Longer operating times due to energy reclamation during braking.

Parts when you need them

Jungheinrich's Parts Fast or Parts Free Guarantee ensures next-business-day delivery by 5:00 PM of all Jungheinrich parts in the United States, or they're free, including freight. For customers in Canada and Mexico, the guarantee ensures shipping of parts within 24 hours from the time the order was placed by the dealer. See your local Jungheinrich dealer for program details.

* Programs may be subject to change without notice and may vary by region. Please ask your local Jungheinrich dealer for complete terms and conditions.