

## Expertise from start to finish

### The KSB range of products and services.

KSB supplies pumps, valves, drives and automation solutions for water, waste water, industrial and building services applications, offering rapid order processing, short lead times and a good price/performance ratio.

### The savings potential offered by KSB products.

The comprehensive FluidFuture®energy efficiency concept allows us to identify and implement the energy savings potentials of your system across its entire life cycle. The objective is to increase the overall efficiency of your system and thereby improve its cost effectiveness. To make that reality, we've developed five interlocking modules:

- System analysis
- Selection
- High-efficiency hydraulic components
- High-efficiency drives
- Demand-driven operation

### By the way, KSB is ahead of its time!

Our products already fulfil the requirements of the ErP regulations for 2015 and beyond!



For more information visit  
[www.ksb.com/fluidfuture](http://www.ksb.com/fluidfuture)

### Energy Efficiency by KSB



#### SYSTEM ANALYSIS

Our experts analyse your system and show where you can save energy – with SES System Efficiency Services or PumpMeter.



#### SELECTION

Your KSB partner or KSB EasySelect will help you find exactly the right pumps and valves.



#### HIGH-EFFICIENCY PUMPS & VALVES

Top pump and valve performance with minimum loss – all thanks to 140 years of innovation and expertise.



#### HIGH-EFFICIENCY DRIVES

Our high-efficiency motors even exceed today's standards.



#### DEMAND-DRIVEN OPERATION

Optimised control systems like PumpDrive continuously match pump output to system requirements.



### Technology that makes its mark

The KSB newsletter – don't miss out, sign up now:  
[www.ksb.com/ksb-en/Newsletter](http://www.ksb.com/ksb-en/Newsletter)

Your local KSB representative:




KSB Aktiengesellschaft  
Johann-Klein-Straße 9  
67227 Frankenthal (Germany)  
[www.ksb.com](http://www.ksb.com)

### Our technology. Your success.

Pumps • Valves • Service



Introduction



### Your success is our focus



### Technology that makes its mark

#### From a single source: all-in solutions from KSB.

As a reliable, long-term partner to our customers, we always focus on your success. You define the goals and we give you the means to achieve them. We offer you tailor-made solutions from our extensive product range that ensure rapid operational availability of your plant, increased cost effectiveness with longer service lives and optimal cost savings.

The constant expansion and optimisation of our product portfolio is aligned to the needs of our customers, which allows us to offer you a high-quality, broad-based range of products with a wide variety of applications.

No matter whether you're using pumps, valves, drives or automation solutions – we optimise your entire hydraulic system.





The building blocks of great solutions  
 – KSB **building services** products

For more information visit  
[www.ksb.com/buildingservices](http://www.ksb.com/buildingservices)

KSB's all-in building services solutions are characterised by their high economic efficiency and reliability. A broad range of products and services makes KSB a strong partner with the ability to meet all your requirements.

**Applications:**

- Drainage
- Water supply (pressure boosting, rainwater harvesting, water storage and supply)
- Heating, ventilation, air-conditioning



Etaline® PumpDrive    AmaDrainer®    Hyamat® VP    Boa Compact®    BOAX®-SF



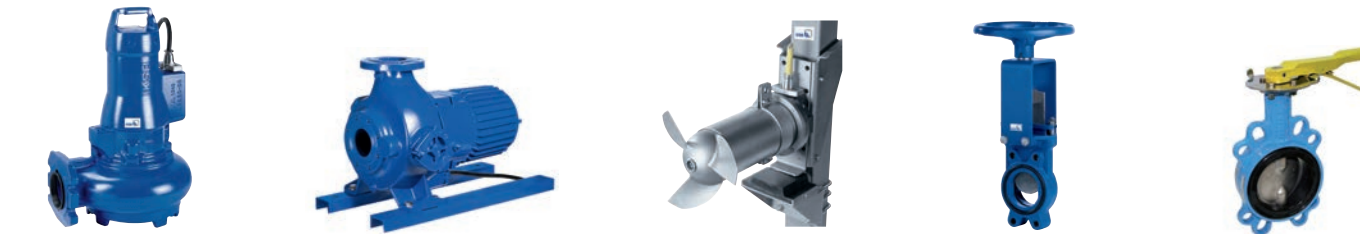
We're at home at the end of the line –  
 Partner with us on **waste water engineering**

For more information visit  
[www.ksb.com/wastewater](http://www.ksb.com/wastewater)

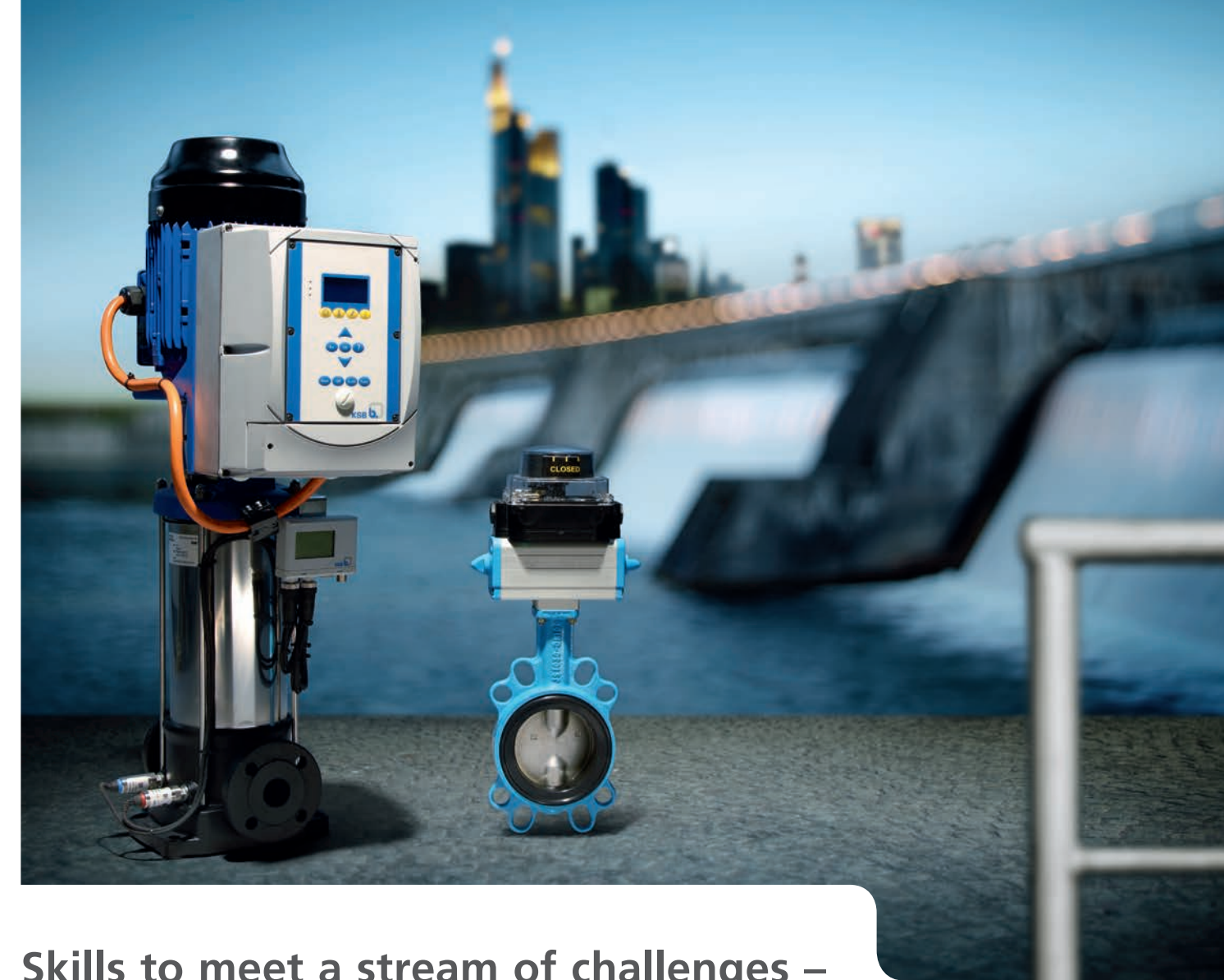
KSB adopts the principles of sustainability, also in its waste water engineering approach, and ensures reliable, smooth process flows in waste water transport, purification and disposal.

**Applications:**

- Municipal waste water treatment and transportation
- Industrial waste water treatment and transportation
- Biogas
- Flood control



Amarex® N    Amarex® KRT®    Amamix®    HERA®-BD    BOAX®-SF Gaz



Skills to meet a stream of challenges –  
**Water engineering** the smart way

For more information visit  
[www.ksb.com/water](http://www.ksb.com/water)

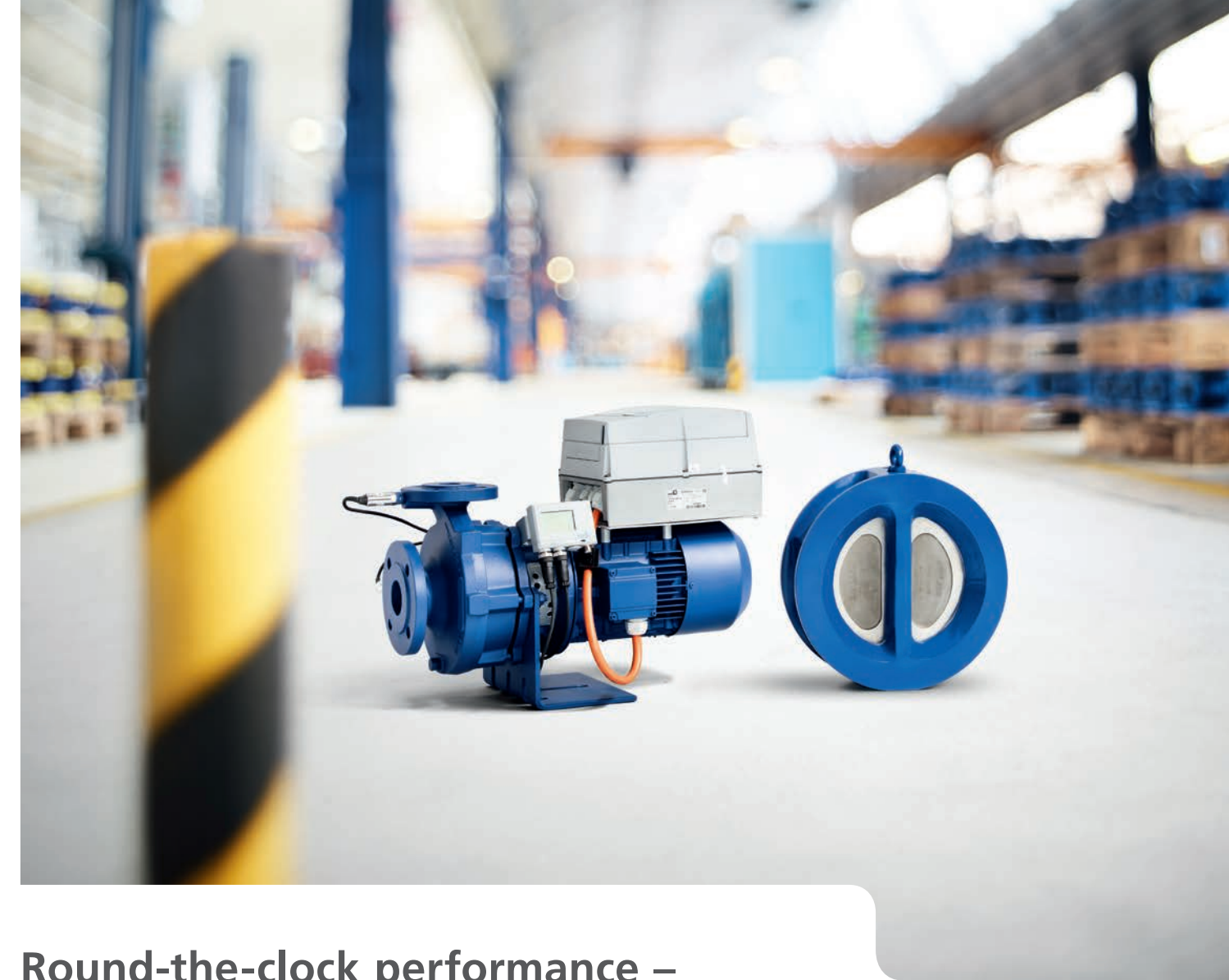
As a professional partner, KSB is committed to a responsible use of resources. Our products are distinguished by their innovative technology, blend technical progress with customer benefit and offer a high degree of availability, reliability and efficiency.

**Applications:**

- Water extraction from rivers, wells, shafts and natural man-made lakes
- Water treatment and processing
- Water transport (raw water transport, pressure boosting, water distribution, spray irrigation systems and irrigation, flood control, drainage)



Movitec® PumpDrive    Omega®    UPA® 150C    BOAX®-B    BOA®-H



Round-the-clock performance –  
 KSB products for **industrial applications**

For more information visit  
[www.ksb.com/industry](http://www.ksb.com/industry)

KSB's products for use in industrial processes are characterised by versatility of application and ensure smooth, reliable operation of your systems. Our pumps and valves offer reliability and durability and demonstrate that individual solutions are standard at KSB.

**Applications:**

- General processes
- Surface treatment systems
- Heat transfer and cooling systems
- Fire protection
- Food and beverage industry



Etaloc® PumpDrive    Etachrom® BC    Multitec    ISORIA®    SERIE 2000